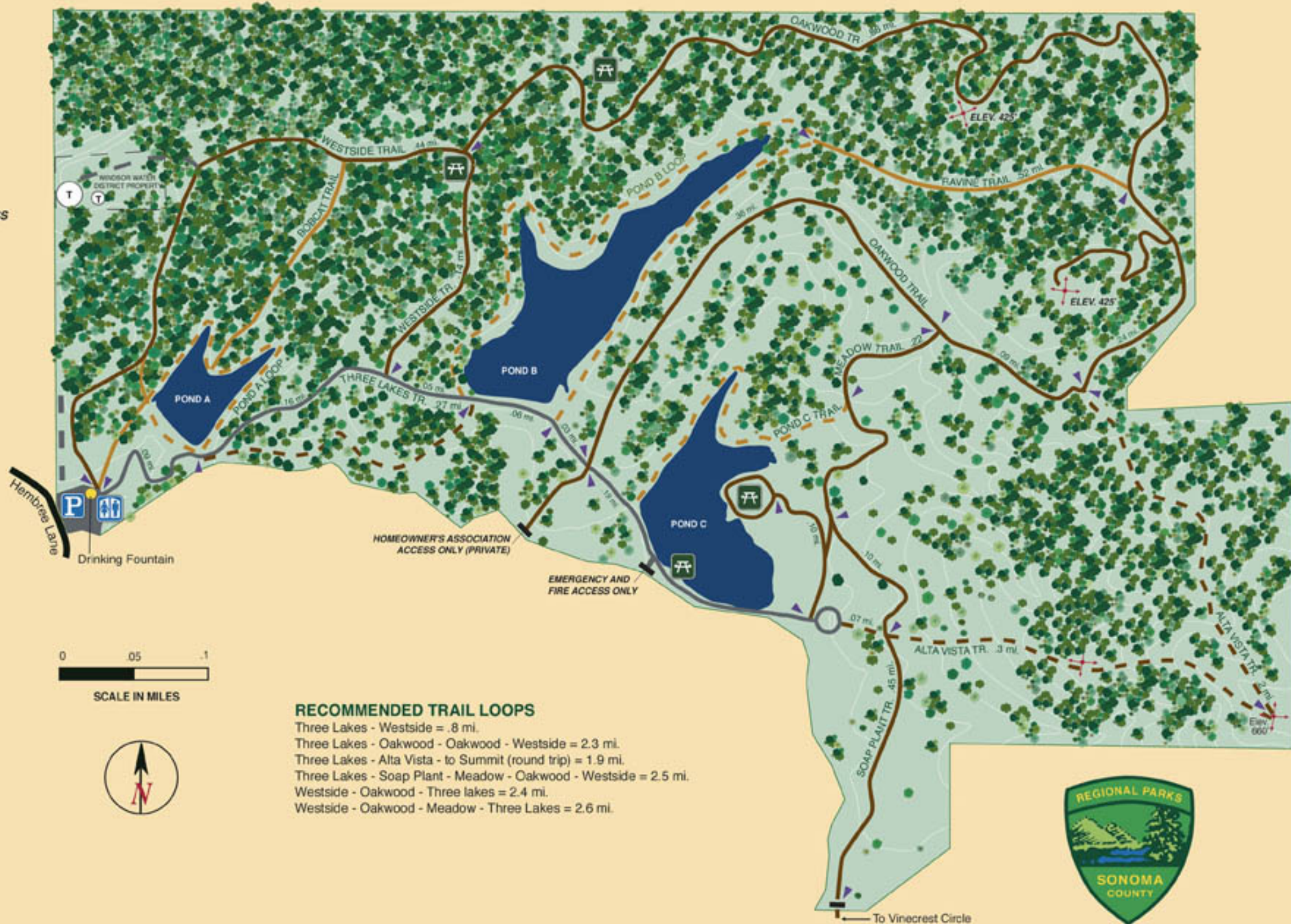


# Foothill Regional Park

## MAP LEGEND

-  DIRT TRAIL  
(Equestrian, Hiking, Bicycle)
-  SEASONAL TRAILS
-  4' WIDE DIRT HIKING ONLY TRAIL
-  COMPACT GRAVEL TRAIL  
NO MOTORIZED VEHICLE ACCESS
-  PUBLIC ROADS
-  SERVICE ROADS  
No Public Access
-  MILE MARKER
-  OVERLOOK
-  FENCE
-  GATE
-  PICNIC TABLES
-  RESTROOMS
-  PARKING LOT
-  DRINKING FOUNTAIN



### RECOMMENDED TRAIL LOOPS

- Three Lakes - Westside = .8 mi.
- Three Lakes - Oakwood - Oakwood - Westside = 2.3 mi.
- Three Lakes - Alta Vista - to Summit (round trip) = 1.9 mi.
- Three Lakes - Soap Plant - Meadow - Oakwood - Westside = 2.5 mi.
- Westside - Oakwood - Three lakes = 2.4 mi.
- Westside - Oakwood - Meadow - Three Lakes = 2.6 mi.



To Vinecrest Circle